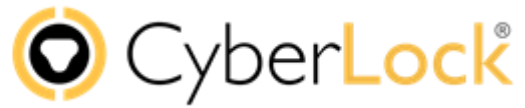




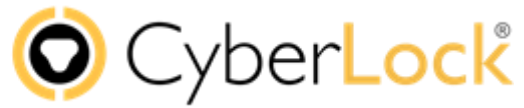
# Product Catalogue

2021



## Table of Contents

Standard CyberLock Cylinders .....	3
Standard CyberLock Padlocks .....	5
Standard Stainless Padlocks .....	6
Standard CyberKeys .....	7
CyberKey Rechargers .....	10
Communicators .....	11
Flex System Components .....	13
Accessories .....	14
FlashLock .....	18
Made to Order CyberLock Products .....	20
Made to Order Specialised Padlocks .....	41



## Standard CyberLock Cylinders

CL-6P1 \*



6-pin, Schlage® format – used in suitable Door Handles and Padlocks

CL-6P3WR \*



6-pin, Schlage format, weather-resistant, designed for padlocks

CL-C5N \*



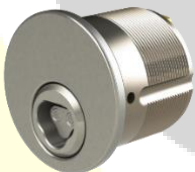
Cam, 3/4" diameter, 9/32" tenon, 90° action, no latch

CL-C6N \*



Cam, 3/4" diameter, 1/4" tenon, 90° & 180° actions, multiple latches supplied

CL-M2 \*



Mortise, 1.125" (Finish choices: bright chrome, brushed chrome, bright brass, dark bronze)

CL-M4 \*

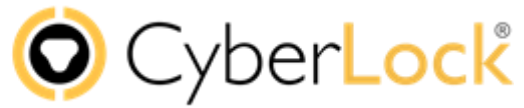


Mortise, 1.25" (Finish choices: bright chrome, brushed chrome, bright brass, dark bronze)

CL-OVL \*



Scandinavian Oval. Drivers are extra.



## Standard CyberLock Cylinders (continued)

CL-PD3030 \*



Profile, double, 30mm outside/30mm inside

CL-PH30 \*



Profile, half, 30mm (from the fixing hole)

CL-PH35 \*



Profile, half, 35mm (from the fixing hole)

CL-PK3030 \*



Profile, knob, 30mm outside/30mm inside

CL-R1 \*



Rim, U.S. standard (Finish choices: bright chrome, brushed chrome, bright brass, dark bronze)

CL-SF03 \*



Small format interchangeable core, Best format, 7-pin

CLT-T6H \*



T-Handle Lock, fixed latch, back-install, tamper resistant

CLT-T67H \*



T-Handle Lock, sliding latch, front install, tamper resistant

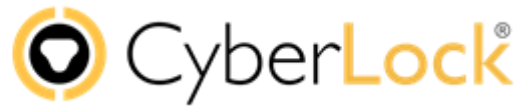
“\*” signifies that these items are also available as ROHS compliant versions. Replace CL by CLR.



## Standard CyberLock Padlocks



"\*" signifies that these items are also available as ROHS compliant versions. Replace PL by PLR.



## Standard Stainless Padlocks

PL-810-1



Stainless plated, 8mm open shackle, KIK cylinder, with heights of 25mm, 60mm or 110mm. 20mm Body Thickness.

Codes PL-810-1(25), PL-810-1(60) and PL-810(110)

PL-802-2



Stainless plated, 8mm open shackle, OVL cylinder with heights of 25mm, 60mm or 110mm. 25mm Body Thickness.

Codes PL-802-2(25), PL-802-2(60) and PL-802-2(110)

PL-802-2WR



Stainless plated, 8mm open shackle, OVLWR cylinder with heights of 25mm, 60mm or 110mm. 25mm Body Thickness. Codes PL-802-2(25), PL-802-2(60) and PL-802-2(110)

PL-830-3



Stainless plated, 11mm open shackle, OVL cylinder with heights of 28mm or 50mm. 25mm Body Thickness.

Codes PL-830-3(28) and PL-830-3(50)

PL-830-3WR



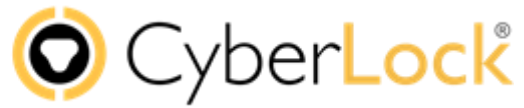
Stainless plated, 11mm open shackle, OVLWR cylinder with heights of 28mm or 50mm. 25mm Body Thickness.

Codes PL-830-3WR(28) and PL-830-3WR(50)



## Standard CyberKeys

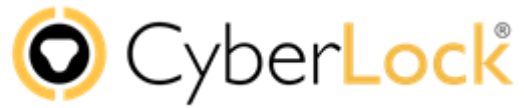




## Standard CyberKeys (continued)

CK-PLUS		Generation 2 User key, rechargeable battery, replaceable tip
CK-USB		Generation 2 User key, rechargeable battery, replaceable tip with additional USB recharge and update facility (micro-USB)
CKR-IR7		User key, infrared, replaceable battery, replaceable tip, ROHS compliant
CKR-IR7-S		User key, infrared, plastic case, removable stainless steel, ROHS compliant
CKR-IR7C		Control key for CL-LF01 and CL-SF03 only, replaceable battery
CKR-PLUS		CyberKey, plus, rechargeable, Generation 2, ROHS compliant
CKR-BLUE2		Bluetooth®, Dual-mode, rechargeable battery, update by Android or IOS mobile phone or other standard communicators, ROHS compliant
CKR-BLUE3		Bluetooth® 5.0 Low Energy, USB, rechargeable battery, Infra-Red with button to activate Bluetooth®, update by Android or IOS mobile phone, or IR Encoder or other standard encoders, ROHS compliant





CKR-USB



Generation 2 User key, rechargeable battery, replaceable tip with additional USB recharge and update facility (micro-USB), ROHS compliant

CKR-X



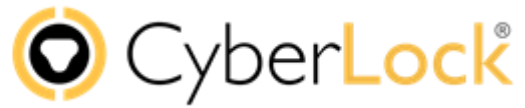
User key, infrared, replaceable battery, extended audit capacity of 12,000, ROHS compliant

Please note:

CyberKeys are available with a hardened Stainless-steel Tip signified by an S suffix. This replaces the standard Brass Tip. Minimum order quantities apply. Details upon request.

Also note:

Generation 1 CyberKeys such as the CK-RXD and the CK-RXD2 reached end of life in June 2020. Should you need these keys please contact us, as we have retained some stocks but availability is limited.



## CyberKey Rechargers

CKS-010



1-key charging station, 120v, 60Hz

CKS-016 \*



6-key charging station, 120v, 60Hz

CKS-F10 \*



1-key charging station, 220v, 50Hz

CKS-F16 \*



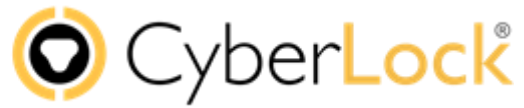
6-key charging station, 220v, 50Hz

PP-01 \*



Power Port, mini CyberKey charger

“\*” signifies that these items are also available as ROHS compliant versions. EG PPR-01, CKSR-F16 etc.



## Communicators

AHG2-W2 \*



CyberKey Generation 2 Authorizer hub, web, 240v, 60Hz

AKG2-01 \*



Cyberkey Authorizer keyport for Gen 1 and Gen 2 Keys when used with AHG2-W2

AH-W2 \*



CyberKey Authorizer hub, web, 220v, 50Hz

AK-01 \*



CyberKey Authorizer keyport, indoor/outdoor installation, 1-8 display, keypad

CKS-020 \*



USB Station with USB cable (also charges rechargeable batteries)

CKS-V02



ValidiKey 2 station for update of Gen 1 or Gen 2 CyberKeys. LAN or WiFi internet connection.

CKV-V02



ValidiKey 2 Vault, used with CK-Plus Keys, for storage and release of Keys in an office environment. LAN or WiFi internet connection.

CKV-V20



ValidiKey 20 vault with integrated touchscreen display, for storage and controlled release of Keys in an office environment. LAN or WiFi connection. Typically used with CK-Plus CyberKeys.



## Communicators (continued)

MK-01 \*



CyberKey Authorizer mini keyport, indoor/outdoor installation. Used with AH-W2 Hubs.

RFB-001



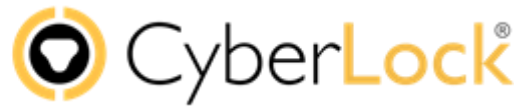
RFID card reader, USB connection

CKV-020S



20-key Vault with server for CK-RXD/RXD2 keys only

“\*” signifies that these items are also available as ROHS compliant versions.



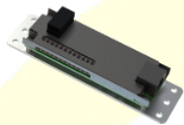
## Flex System Components

FS-CV01



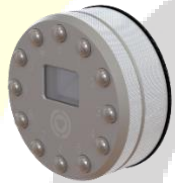
CyberKey weatherized vault module

FS-DC01



Door & I/O module

FS-KD01



Keypad display module

FS-MP01



Flex keyport

FS-RH02



13MHz RFID reader with beeper

FS-SH01



CyberLock® Flex System hub, 8 input/output ports

Please note: Flex2 will be available from Q1 2021, and features new Door Controllers, KeyPad options and entry control options such as Bluetooth.





## Accessories

A-CC375



Collar for 3/4" diameter cams, .375" length (minimum order may apply)

A-IC01



Adapter kit, CL-SF03 to Yale IC format (minimum order may apply)

A-U120



USB Station transformer, 120v, 60Hz

A-U220



USB Station transformer, 220v, 50Hz

BOX-01



Single-gang box, indoor/outdoor

BOX-02

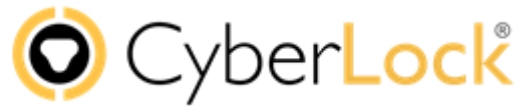


4" x 4" x 4" junction box

BOX-03



6" x 6" x 4" junction box



## Accessories (continued)

BRUSH



Lock and key pin cleaning brush, stainless steel bristles

BRUSH-D



Lock and key pin cleaning brush, stainless steel bristles, Dremel®

CK-CAP-010



Key tip cap, 10 pack

CP-05



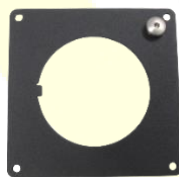
CyberPoint®, a non-locking version of CyberLock, used for data recording at checkpoints

FS-PLATE-101



Mounting plate for RFID, knob, and display modules, BOX-01

FS-PLATE-201



Mounting plate for weatherized vault module, BOX-02

FS-PLATE-202



Mounting plate for keypad display module, BOX-02



## Accessories (continued)

FS-PLATE-301



Mounting plate for BOX-03

HDM1459



USB micro cover for CK-RXD2, black, 10 pack

HDP250



End cap for CK-RCG/RXD, black

HDP237



End cap for CK-RCG/RXD, black

TIP-001



Replaceable tip for CK-IR7 and CK-RBT

TIP-008



Replaceable case for CK-RXD

TIP-009



Upgrade kit from CK-RCG to CK-RXD





## Accessories (continued)

TIP-010



Replaceable case for CK-RXD2

TWC-016



Standard USB to micro USB cable for CK-RXD2

## FlashLock

CK-FLASH



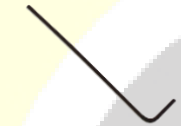
CyberKey Flash

FK-01



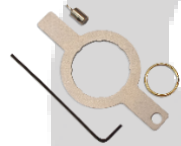
Flashlock, User Fob

FL-BAT-KIT



Battery replacement kit - Mortise and Profile locks

FL-BAT-KIT-PL



Battery replacement kit - Padlocks

FL-M4

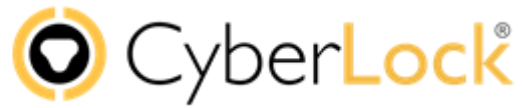


Flashlock, Mortise 1-1/4"

FL-PH30



FlashLock, 30mm Half Euro Profile



## FlashLock (continued)

FL-PL02



FlashLock Padlock, 2" Shackle

FL-R1-KIT



FlashLock Adaptor, Mortise to Rim

FM-01



FlashLock, Master Fob

FL-BOX-01

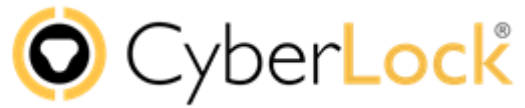


Flash Box to securely store mechanical Keys or Cards, opened by Mobile Phone, Fob or Card.

FL-BOX-01S



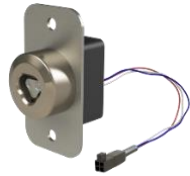
Flash Box with hanger to securely store mechanical Keys or Cards, opened by Mobile Phone, Fob or Card.



## Made to Order CyberLock Products

(minimum orders quantities apply)

AS-SLCA-300



Australian Post Cable Assembly, Complete, Steel Nose

CH-Tube-NW48



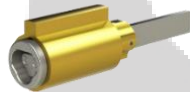
Security Tube, 48mm diameter

CH-Tube-NW70



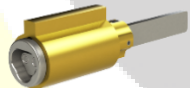
Security Tube, 70mm diameter

CL-6P2



6-pin, Yale, 1801 hardware format

CL-7P1



7-pin, Yale 1802A hardware format

CL-C10N

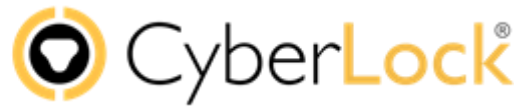


Camlock, Parking Cashbox

CL-C11ND



Camlock, 22mm dia, 11mm tenon, drill resistant



## Made to Order CyberLock Products (continued)

CL-C12N



Camlock, 22m dia, 1/4" - 20 tenon

CL-C13N



Camlock, 22m dia, 11mm post

CL-C14N



Camlock, Ri511/509 format

CL-C15N



Camlock, Ri 503 format

CL-C16N



Camlock, Ri521 format

CL-C17N

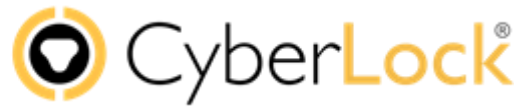


Camlock, 30mm diameter body, 11mm tenon

CL-C18N



Camlock, 3/4" by 1-3/8", 1/4" tenon, square post



## Made to Order CyberLock Products (continued)

CL-C19N



Camlock, 21mm body, 10mm post

C-21N



Swiss Cabinet Format

CL-C1N



Camlock, 3/4" dia, nickel

CL-C2N



Camlock, 95-210 or 30-180 rotation

CL-C3N



Camlock, 1.5" hook latch

CL-C5NC

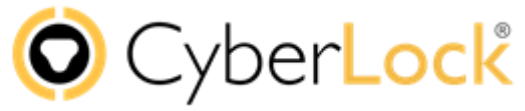


Camlock, 9/32" tenon with collar

CL-C6NF



Camlock, 3/4" dia, 1/4" tenon, fully threaded



## Made to Order CyberLock Products (continued)

CL-C7N



Camlock, telephone format

CL-C8N



Camlock, 3/5"-24 tenon, 90 deg rotation

CL-C9N



Camlock, 18.75mm dia, Custom thread, Custom tenon

CL-CA



Cabinet Format, weather resistant

CL-CA2D



22mm English Cabinet Format, drill resistant

CL-CB

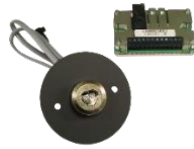


Camlock, 28mm



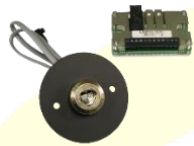
## Made to Order CyberLock Products (continued)

CL-ES2



Electronic Switch

CL-ES2-3M



Electronic Switch, 3m Cable

CL-FK4141R



41mm to 41mm Removable Knob, Fichet compatible

CL-FR050



French Round

CL-FR050B



French Round, Bayonet Style

CL-FR075



French Round, 75mm

CL-FR100



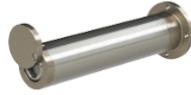
French Round, 100mm





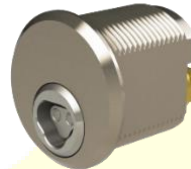
## Made to Order CyberLock Products (continued)

CL-FR120



French Round, 120mm

CL-IKC



Euro Round Cam

CL-KB1



Kee Blok

CL-LF01



Large Format IC Core, Schlage format

CL-M14



1-7/8" Mortise Lock

CL-M2C

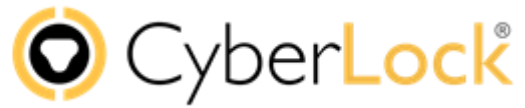


1-1/8" Mortise with cover

CL-M4C



1-1/4" Mortise with cover



## Made to Order CyberLock Products (continued)

CL-OK3535



British Oval with Knob, 35mm-35mm

CL-OVLD



Scandinavian Oval, drill resistant

CL-OVLD2



Scandinavian Oval, drill resistant

CL-OVLI



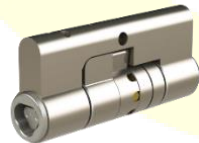
Scandinavian Oval, interior installation

CL-OVLWR



Scandinavian Oval, with cover

CL-PD3535

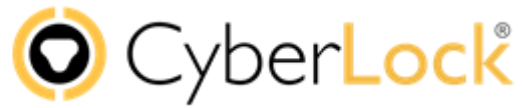


European Profile, 35mm-35mm Double Cylinder format

CL-PD4545



European Profile, 45mm-45mm Double Cylinder format



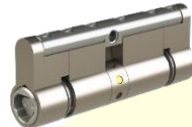
## Made to Order CyberLock Products (continued)

CL-PD6030



European Profile, 60mm-30mm Double Cylinder format

CL-PDFR4045



European Profile, 40mm-45mm Free Rotating Double Cylinder format

CL-PH30T



European Half-Profile, 30mm True

CL-PH32.5C



European Half-Profile, 32mm with cover

CL-PH37C



European Half-Profile, 37mm with cover

CL-PH40

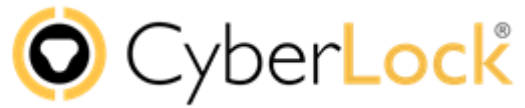


European Half-Profile, 40mm

CL-PH42C



European Half-Profile, 42mm with cover



CL-PH45



European Half-Profile, 45mm

CL-PH55



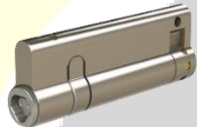
European Half-Profile, 55mm

CL-PH65C



European Half-Profile, 65mm with cover

CL-PH80



European Half-Profile, 80mm

CL-PH80C



European Half-Profile, 80mm with cover

CL-PHS32.5XD



European Half-Profile, 32.5mm drill resistant

CL-PHS36



European Half-Profile, 36mm Strengthened

CL-PK32.530C



European Profile with Knob, 32.5mm-30mm with cover



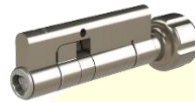
## Made to Order CyberLock Products (continued)

CL-PK3535



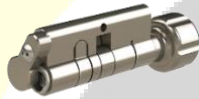
European Profile with Knob, 35mm-35mm

CL-PK3550



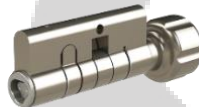
European Profile with Knob, 35mm-50mm

CL-PK3735C



European Profile with Knob, 37mm-35mm, with cover

CL-PK4030



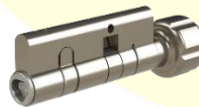
European Profile with Knob, 40mm-30mm

CL-PK4030C



European Profile with Knob, 40mm-30mm, with cover

CL-PK5030



European Profile with Knob, 50mm-30mm

CL-PK5050



European Profile with Knob, 50mm-50mm



CL-PK6030



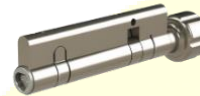
European Profile with Knob, 60mm-30mm

CL-PK7030



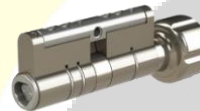
European Profile with Knob, 70mm-30mm

CL-PK8030



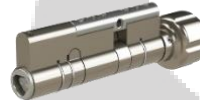
European Profile with Knob, 80mm-30mm

CL-PKS3635



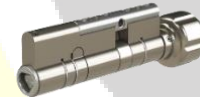
European Profile with Knob, 36mm-35mm, high security

CL-PKS6030

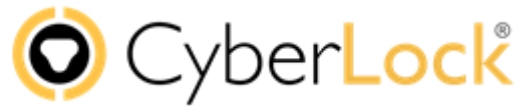


European Profile with Knob, 36mm-30mm, high security

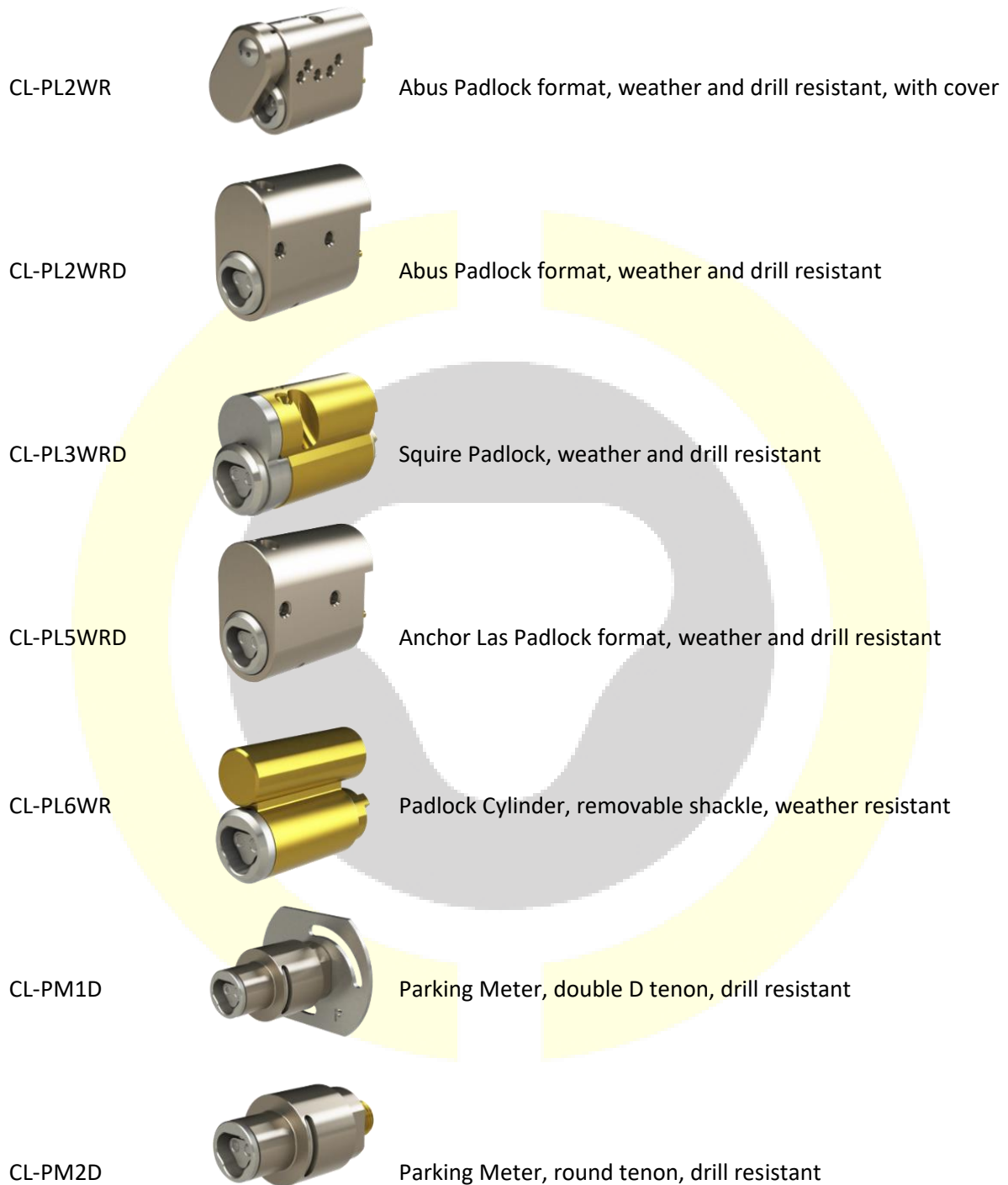
CL-PKS6030R



European Profile with Knob, 60mm-30mm, high security, removable knob

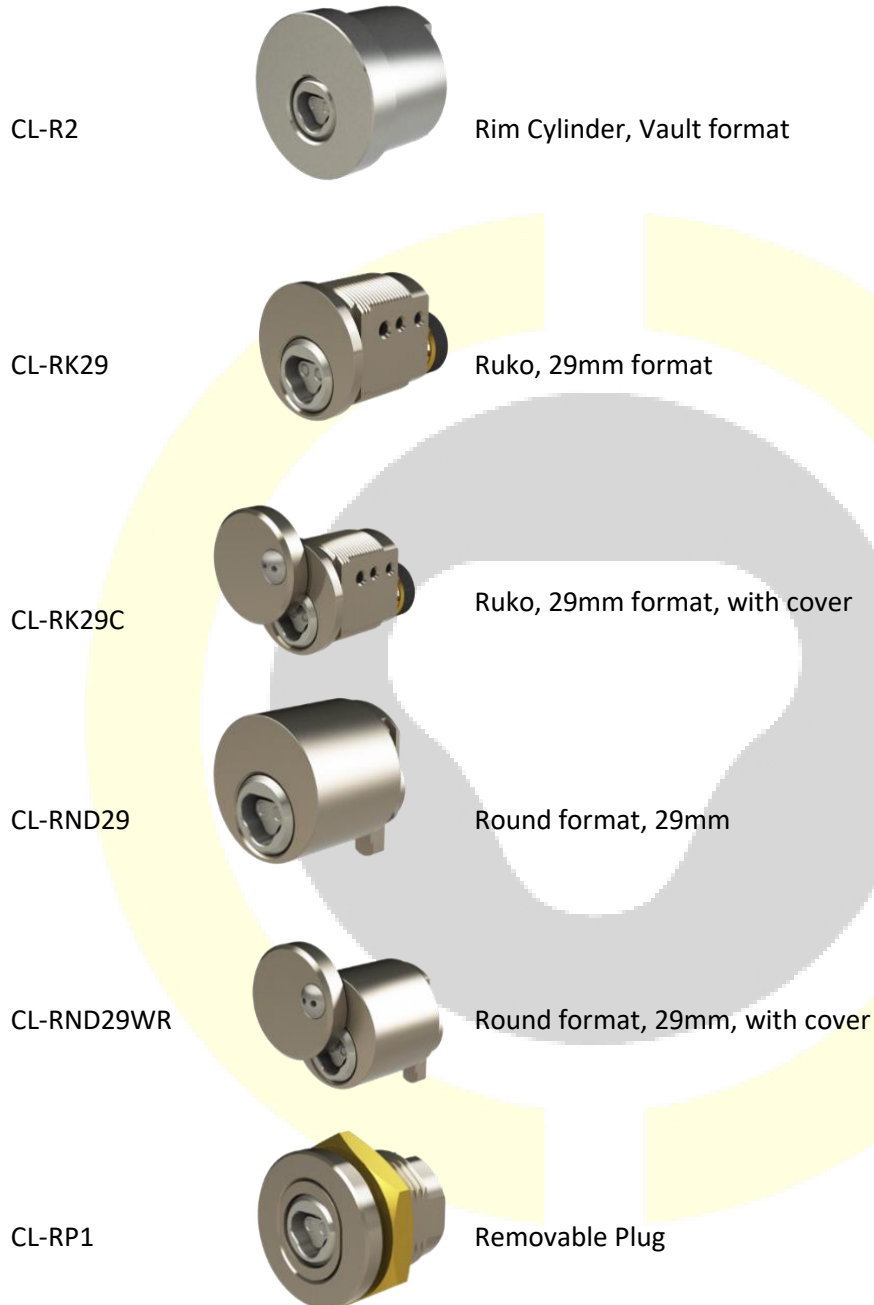


## Made to Order CyberLock Products (continued)





## Made to Order CyberLock Products (continued)







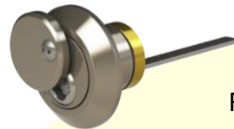
## Made to Order CyberLock Products (continued)

CL-RP2



Removable Plug, cabinet format

CL-RWR



Rim format, weather resistant

CL-SO2



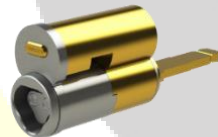
Switch, On-Off

CL-SD3232



Swiss format, double 32mm-32mm

CL-SF03-A



Small format IC core with integrated driver

CL-SH32



Swiss format, half 32mm



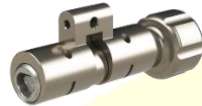
## Made to Order CyberLock Products (continued)

CL-SK3232



Swiss format, 32mm-32mm with knob

CL-SK3232R



Swiss format, 32mm-32mm with removable knob

CL-SM2



Switch, Momentary

CL-TC1



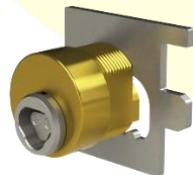
Traffic Cabinet Lock

CL-TCG



Traffic Cabinet Lock, Gatsometer style

CL-TEL



Telephone Cash Box

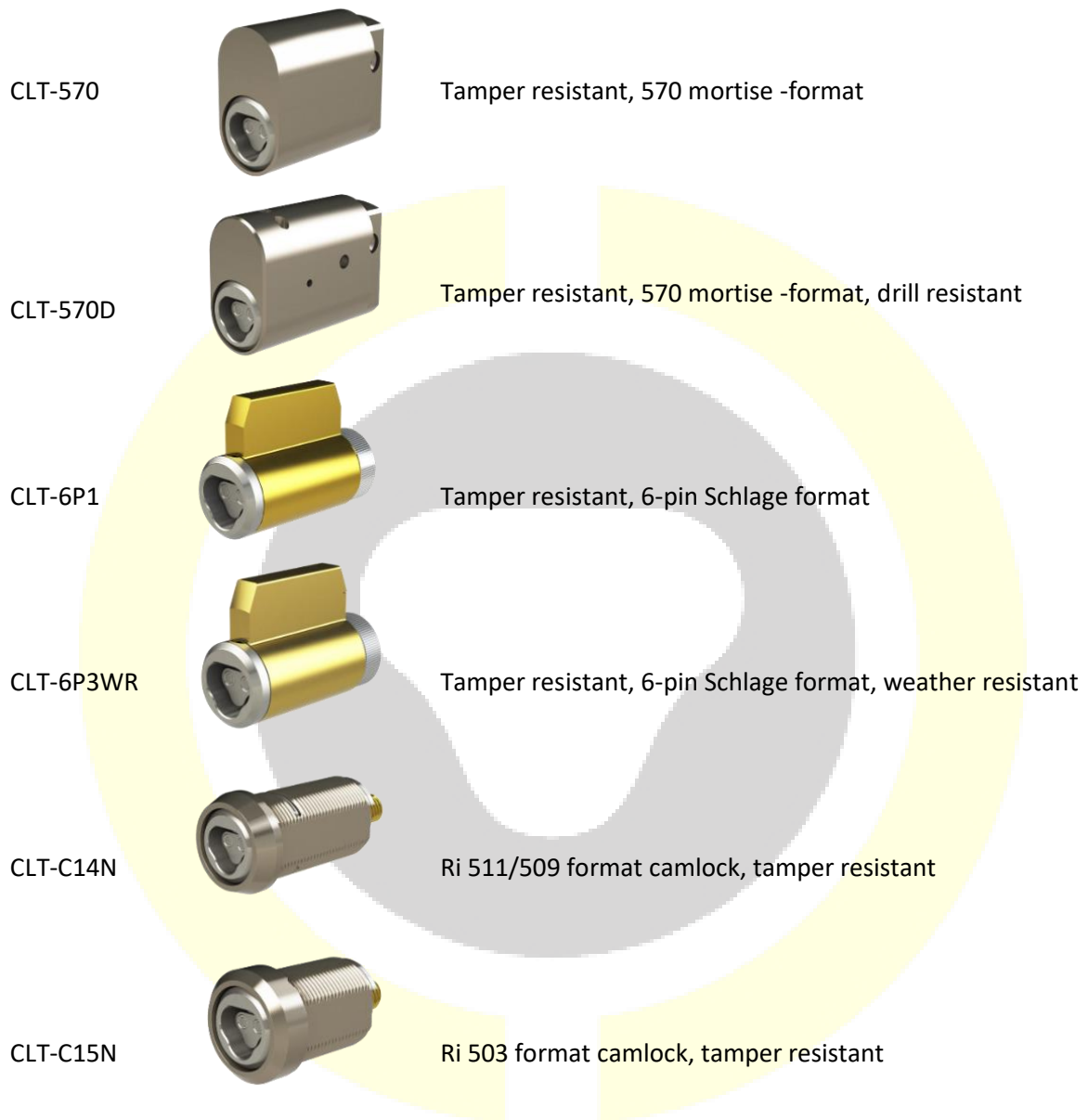
CLT-530

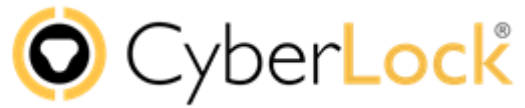


Tamper resistant, 530 format



## Made to Order CyberLock Products (continued)





## Made to Order CyberLock Products (continued)

CLT-C16N



Ri 521 format camlock, tamper resistant

CLT-C19N



21mm body, 10mm post camlock, tamper resistant

CLT-C1N



Camlock, 3/4", tamper resistant

CLT-C6N



Camlock, 3/4" dia, 1/4" tenon, tamper resistant

CLT-LF01

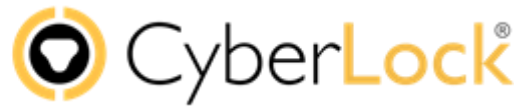


Large Format IC Core, Schlage format, tamper resistant

CLT-M2



1-1/8" Mortise Lock, tamper resistant



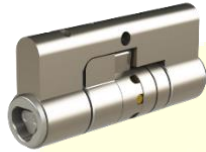
## Made to Order CyberLock Products (continued)

CLT-M4



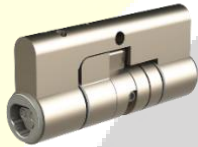
1-1/4" Mortise Lock, tamper resistant

CLT-PD3535



Euro Profile, Double, 35mm-35mm, tamper resistant

CLT-PD3535L



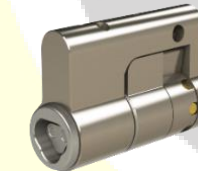
EuroProfile, Double, 35mm-35mm, tamper resistant, lost motion

CLT-PH30



EuroProfile, Half, 30mm, tamper resistant

CLT-PH35

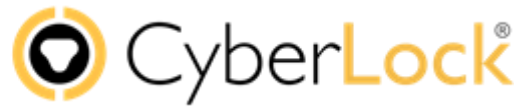


EuroProfile, Half, 35mm, tamper resistant

CLT-PHS36

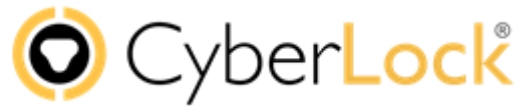


EuroProfile, Half, 36mm, tamper resistant, high security



## Made to Order CyberLock Products (continued)





## Made to Order CyberLock Products (continued)

CLT-S02



Switch, On-Off, tamper resistant

CLT-SF03



Small format IC core, tamper resistant

CLT-SM2



Switch, Momentary, tamper resistant

CLTX-PL5WRD



Anchor Las Padlock format, weather and drill resistant, tamper resistant

SL-DB1



Safelock, Dead Bolt Latch

SL-DB1KR



Safelock, Dead Bolt Latch, key retaining

SL-KS1



Safelock, KeyPad activated Latch



SL-KS2



Safelock, Keypad activated Latch

SL-SP1



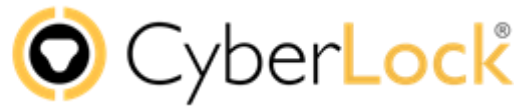
Safelock, Spring Latch

SL-SW1



Safelock, Swing Latch





## Made to Order Specialised Padlocks

(minimum orders quantities apply)

PL-BB45



Padlock, Barbell format, 45mm Shackle

PL-HP1



Padlock, Hockey Puck format

PLT-01



Padlock, 1" 9.63 mm Shackle, tamper resistant

PLT-01KR



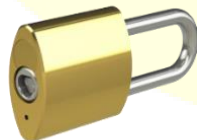
Padlock, 1" 9.63 mm Shackle, key retaining, tamper resistant

PLT-02



Padlock, 2" 9.63 mm Shackle, tamper resistant

PLT-02KR

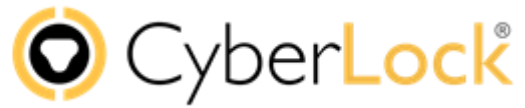


Padlock, 2" Shackle, key retaining, tamper resistant

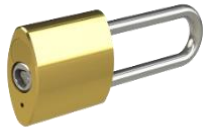
PLT-03



Padlock, 3" Shackle, tamper resistant



PLT-03KR



Padlock, 3" Shackle, key retaining, tamper resistant

PLT-BB45



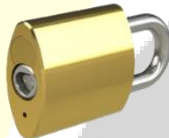
Padlock, Barbell format, 45mm Shackle, tamper resistant

PLT-HP1



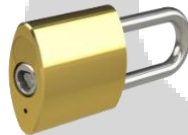
Padlock, Hockey Puck format, tamper resistant

PL-01-A



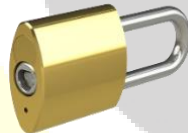
Padlock, 1" x 5/16" Shackle

PL-01KR-1A



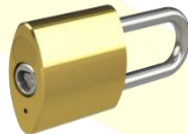
Padlock, 1" x 5/16" Shackle, key retaining

PL-02-A



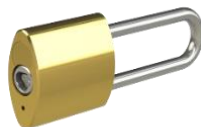
Padlock, 2" x 5/16" Shackle

PL-02KR-A



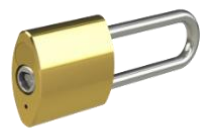
Padlock, 2" x 5/16" Shackle, key retaining

PL-03A



Padlock, 3" x 5/16" Shackle

PL-03KR-A



Padlock, 3" x 5/16" Shackle, key retaining



PL-830-4DR



Stainless plated, 11mm open shackle, Drill Resistant cylinder (CEN 4 Rating) with shackle heights of 28mm or 50mm. 25mm Body Thickness.

Codes PL-830-3DR(28) and PL-830-3DR(50)

PL-830-4DRPS



Padlock, 11mm Protected Shackle, Drill Resistant CEN 4

PL-830-4DRFPS



Padlock, 11mm Protected Flying Shackle, Drill Resistant CEN 4

PL-840-4



Padlock, 14mm Open Shackle, Standard Oval Cylinder, 28mm shackle height, 30mm Body Thickness

PL-840-4WR



Padlock, 14mm Open Shackle, Weather Resistant Oval Cylinder, 28mm shackle height, 30mm Body Thickness

PL-840-4DR



Padlock, 14mm Open Shackle, Drill Resistant Oval Cylinder (CEN 5), 28mm shackle height, 30mm Body Thickness

PL-844-4DRPS



Padlock, 14mm Protected Shackle, Drill Resistant Oval Cylinder (CEN 5), 28mm shackle height, 30mm Body Thickness

PL-844-4DRFPS



Padlock, 14mm Protected Flying Shackle, Drill Resistant Oval Cylinder (CEN 5), 28mm shackle height, 30mm Body Thickness

KeySentry



Highly secure storage of mechanical keys or cards – with the benefits of CyberLock protection as well as electrically opened options.



For further information, please contact our Sales Team:

[sales@sellox.co.uk](mailto:sales@sellox.co.uk)

Tel: 01273-741528

Tel: 01299-269470

